



THE POINT
AT NEWTON'S LANDING

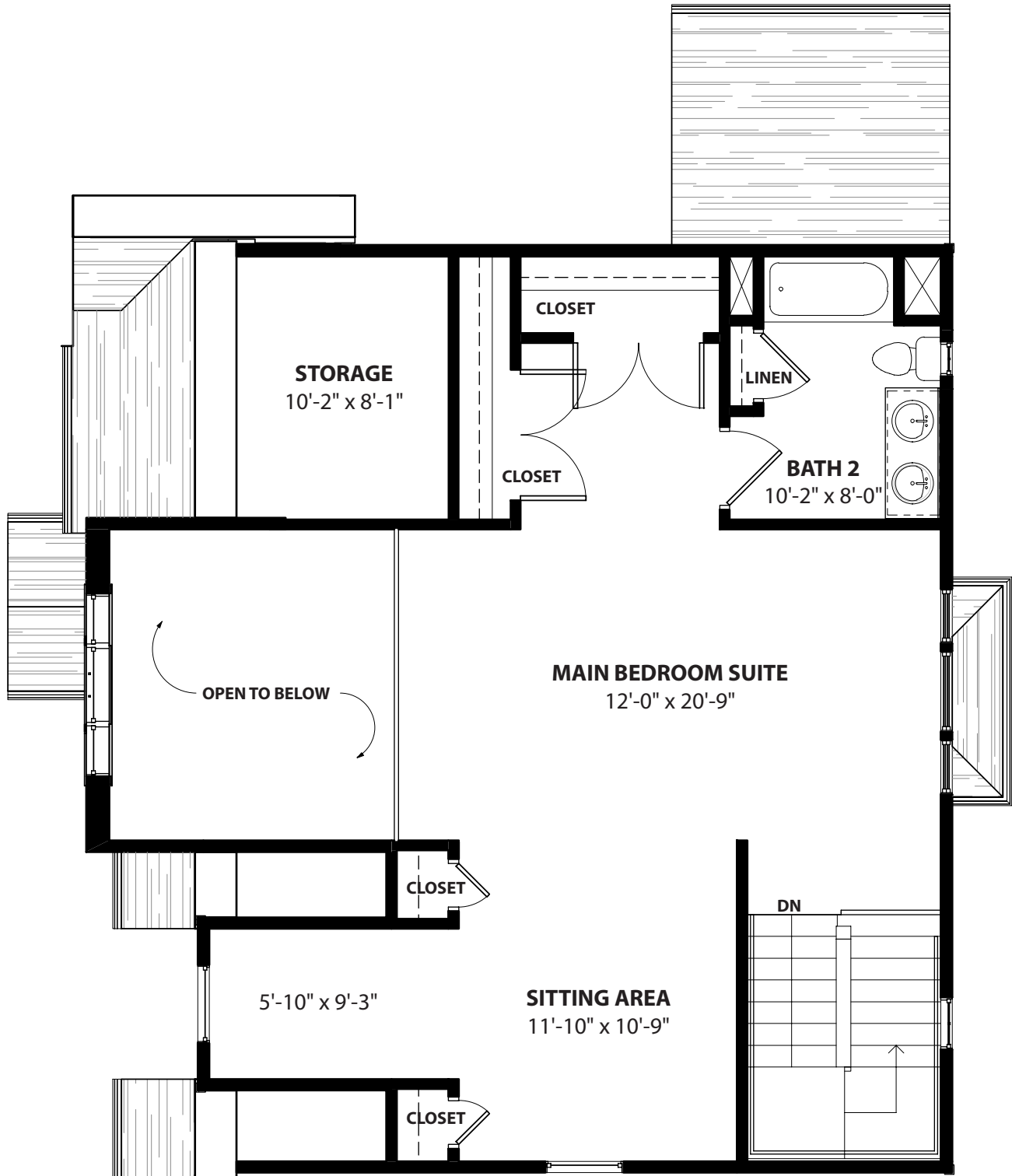


T H E R A N C O C A S



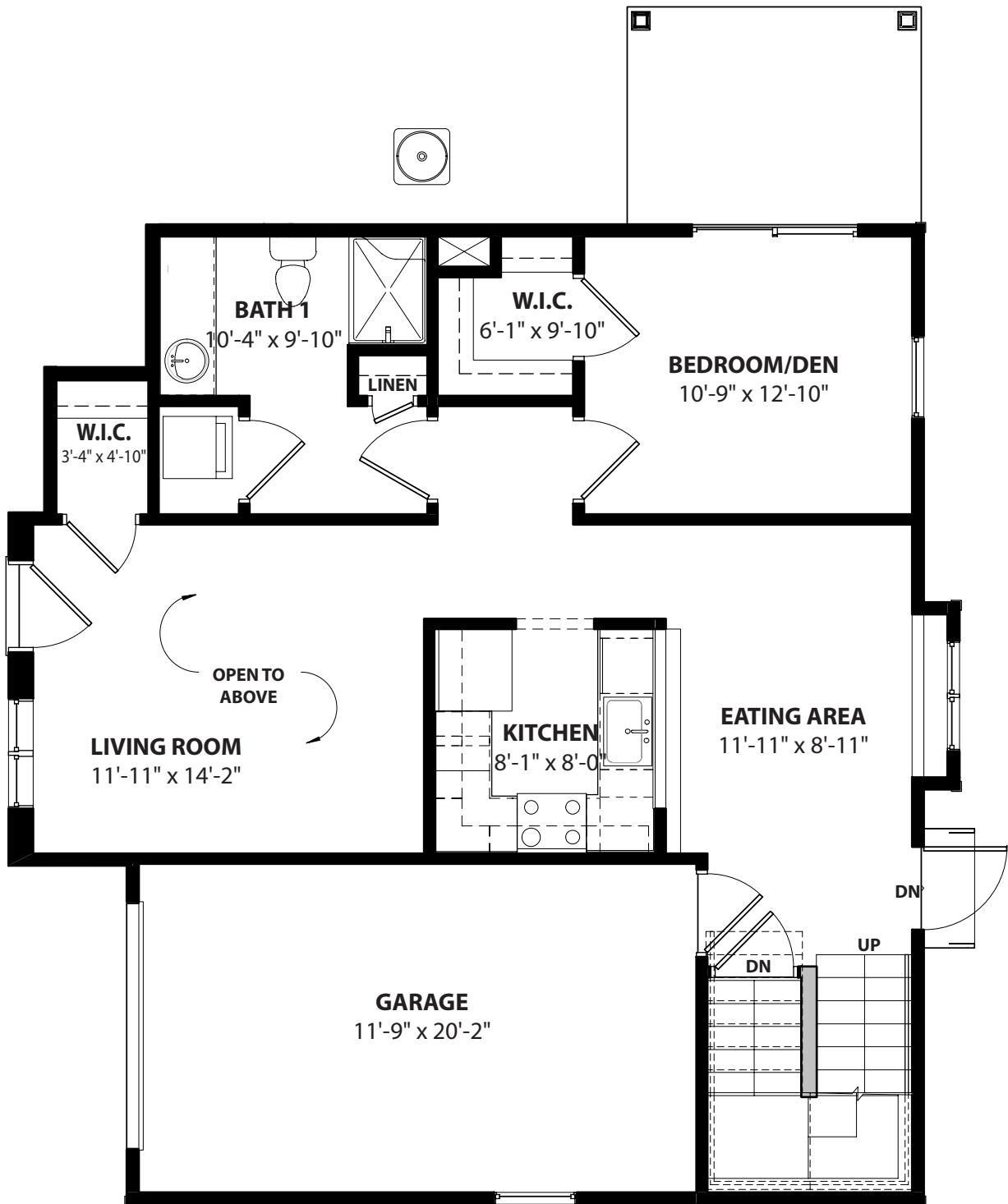
THE RANCOCAS

SECOND FLOOR



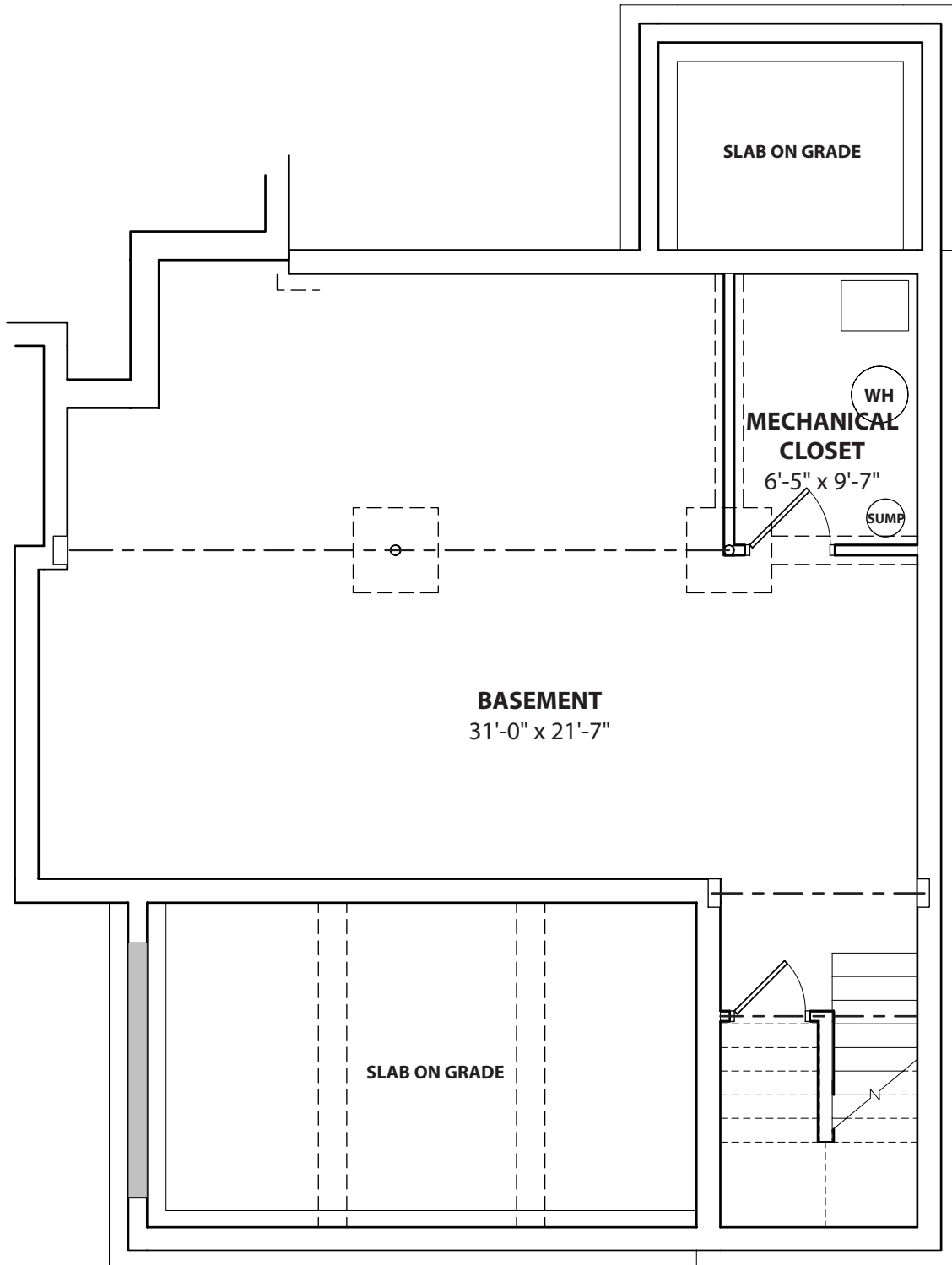
THE RANCOCAS

FIRST FLOOR



THE RANCOCAS

BASEMENT



Approximate total sq. ft:

Rancocas A:

2,532 with basement / 1,814 without basement

Rancocas B:

2,472 with basement / 1,733 without basement